



SHEINFELD ARCHITECTS

WHERE EXCEPTIONAL SPACE BEGINS

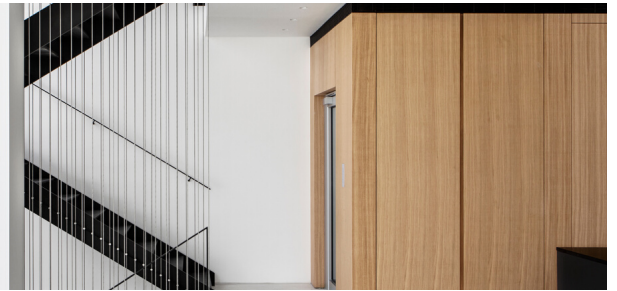


INNOVATIVE ORIGINAL & TIMELESS DESIGN

WWW.RSHEIN-ARC.CO.IL

Our Story

WE ARE A CREATIVE BOUTIQUE ARCHITECTURE FIRM, THAT INTEGRATES INNOVATION, PROFESSIONALISM, AND PRECISE SERVICE WHICH COMBINES IN HARMONY WITH CLASSIC TIMELESS DESIGN, CUSTOMIZED FOR THE NEEDS OF OUR PRIVATE CUSTOMERS AND CONTRACTORS.



OVERVIEW

The boutique holds a range of planning and design solutions for private construction, and for residential buildings that presents a delicate, innovative, and original design culture.

The boutique emphasizes on finding unique planning ideas that express the programmatic needs and provides added value of aesthetics and uniqueness to the project whilst understanding the needs of the customer, meeting the timelines and ensuring results with no compromises in performance and creativity.

Each project in the boutique is given personal attention by the partners in our office.

Personal accompaniment and brainstorming by creative minds are the key parts of the design experience process to ensure service to our customers.

A Meticulous Customer Experience

We base our service experience on an accurate characterization of the project, listening to customer needs and lifestyle, in shared dialogue, and fulfilling in a personal expression, and personal attention to the overall picture. We keep in mind every detail in our service which is based on personal accompaniment of the client through all stages of the project, and transparency in all milestones.

COMPANY VISION

For us, each customer is unique and special – as such we are attentive to their personal feelings, needs, personal taste and their personal design dream.

Our planning and design experience results from a collaborative, attentive, precise and fulfilling process, tailored to the design dream, needs and budget of the customer.

We guarantee you a personal empowering and exciting experience with exclusive boutique architecture.

INNOVATIVE ORIGINAL & TIMELESS DESIGN

INTERGENERATIONAL INTEGRATION OF PROFESSIONAL
ARCHITECTURE AND EXPERIENCE IN THE SHEINFELD FAMILY, RACHEL SHEINFELD
AND HER DAUGHTER, TAL.



MY PROFESSIONAL PHYLOSOPHY RACHEL SHEINFELD

Planning and Designing for me is a fun, creative process particularly inspired by deep observation and listening to the customer, and their dreams.

The process of personal discovery of the elements, materials, colors, and styles that define and characterize their design taste, excites me every time, and as such, this harmonious personal design produces and fulfills ONE OF A KIND result.

When I start designing, I believe LESS IS MORE and so I put emphasis on precise design choices in the right dose that creates a desired look rather than a design loaded with multiple styles - the result is harmonious, peaceful and attractive to the eye.

My dream - that through my design, I can help my clients to achieve their personal dreams according to their taste and create a design that is warm, comfortable and functional, shining and vital, a place where they can feel naturally attached and share this welcoming experience also with their guests.

By doing so, I would have a place in their lives and they would be a part of my existence.

Rachel Sheinfeld



OUR SERVICE SPECIFICATIONS FOR PRIVATE CUSTOMERS

OUR WORKING PRINCIPLES FOR PRIVATE HOUSES

The firm operates as a creative environment in an open and attentive client dialogue to enable it to produce a unique and original project experience within the budget and defined schedules. We are committed to astonish and offer a variety of planning solutions in an original, functional and top quality design for every challenge in your project.

We have built our reputation focused on customer needs and goals, schedules and budget to create a custom design concept for you that will inspire and express your own personal style and lifestyle. We advocate a personal service that is available, courteous and collaborative, which ensures that you maximize the property you have purchased., by design and functionality.

We believe that any home is a process and a story of the customer, as a result we do both the architectural and interior design of the project for a complete and harmonious result. In addition, we offer completing styling services for accessories and furniture for the home.

We work in full cross-functional collaboration with all professionals while providing flexible, professional, and timely solutions to the project requirements. Our firm specializes in all the complex bureaucracy and processes involved in issuing a building permit for private construction. We would love to provide you with the best experts available for this, to go along with you in planning and supervision services for private construction.

OUR SERVICES FOR PRIVATE CUSTOMERS:

ARCHITECTURAL PLANNING:

- Preliminary examination of the permitted construction rights, and the maximum utilization of the rights according to the project planning guidelines.
- Preparation of a program that includes the primary planning of the house according to the customer needs. The custom design concept is created according to the customer lifestyle and personal taste.
- Exterior 3D design of the house after the approval of the architectural planning.
- Preparing a building permit for the relevant planning and construction committee and fulfilling the requirements of the committee until a building permit is obtained.
- Preparation of detailed execution plans including details and lists and top supervision.
- Collaboration with relevant project consultants / engineers.

INTERIOR DESIGN

- Preparing the complete furniture arrangement and formulating a concept for the interior design that follows the architectural language of the home.
- Planning and selecting lighting fixtures. Detailed electrical planning.
- Collaboration with all the consultants of all home systems and integration of all the systems together.
- Preparing bathroom layouts and choosing all flooring / cladding and sanitary appliances.
- Custom carpentry design.
- Preparation of implementation plans of all of the above and top supervision.

STYLING

- Selecting the home furnishing.
- Selection of the textiles such as carpets and window treatments.
- Selection of art works.





Projects Gallery

BE INSPIRED BY THE
MODERN DESIGN
SIGNATURE OF
SHEINFELD
ARCHITECTS





Projects Gallery

BE INSPIRED BY THE
ECLECTIC DESIGN
SIGNATURE OF
SHEINFELD
ARCHITECTS





Projects Gallery

BE INSPIRED BY THE
TUSCAN DESIGN
SIGNATURE OF
SHEINFELD
ARCHITECTS



Our Office's Services

ARCHITECTURAL PLANNING

Formulating a planning concept in response to living experience, needs, lifestyle and budget. Submitting permits to the municipality, hiring a contractor, preparing architectural execution plans for construction and various consultants, and accompanying the construction process on site, managed by the contractor.



INTERIOR DESIGN

Formulate a design language for the interior according to the living experience and lifestyle of the customer. Formulate the execution plans for interior design including superposition and specifications. Choosing lighting fixtures, sanitary ware, flooring and coatings and textile items for home design. Carpentry for kitchens, study rooms, closets, storage rooms, cinema, bathroom cabinets, shelving and libraries



URBAN BOUTIQUE URBAN RENEWAL

Residential planning in the urban space respecting the location restrictions and the challenges in the existing building. Attentive accompaniment for addressing the needs of developers, the new and old tenants on the path to the end result - a new, spacious building with quality of life.



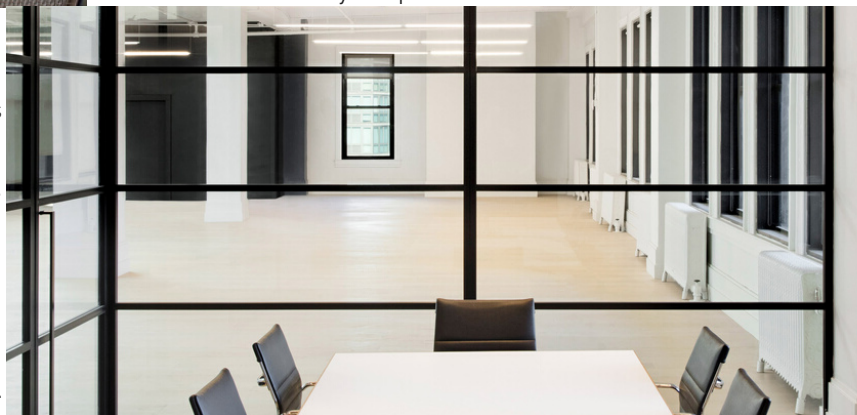
INTERIOR DESIGN PROCUREMENT IN ISRAEL AND ABROAD

Personal accompaniment to the boutique's customers for purchasing finishing objects, furnishings, light fixtures, sanitary ware, accessories and others according to the interior design plan. The journey will be among quality providers, designers and boutique shops in Israel and abroad according to the designing language and your personal taste.



BUSINESS DESIGN

Planning of the division of space according to the company's needs. Design Concept that represents the company's values. Design of work spaces that addresses ergonomic concerns and the employee's experience, transparency, team work and private work. Integration of leading providers in office furnishing bespoke ergonomic custom furnishing and the designated woodworking. Process accompanied by superior supervision.



**SHALL WE MEET
FOR COFFEE?**

DO YOU HAVE A NEW PROJECT?
DO YOU WANT A HOME THAT
WILL ANSWER ALL THAT
MATTERS TO YOU?
DO YOU WANT TO HEAR ABOUT
INNOVATIVE DESIGN
SOLUTIONS?
DO YOU WISH US TO DEVELOP
YOUR UNIQUE DESIGN
LANGUAGE WHILE GIVING YOU
CREATIVE SOLUTIONS?
CONTACT US. WE WILL BE
HAPPY TO MEET YOU,
KNOW YOU AND EXPLAIN A
LITTLE MORE ABOUT OUR FIRM'S
EXCELLENT CAPABILITIES
INTEGRATING ARCHITECTURE
AND DESIGN INTO YOUR NEXT
PROJECT.

Rachel and Tal Sheinfeld



OUR SERVICE EXPERIENCE IS BASED ON:

A detailed characterization of the project, listening to the customer's needs and his lifestyle, in a shared dialog, and personal communication, personal attention and an eye for details. Our service is based on personally accompanying our clients through all stages of the project, with transparency in all milestones.



Detailed Project
Characterization



Listening
to the Client's Needs



Personal Accompaniment
Throughout the Process

Telephone:09-7415713
23 A' Ha Hagana St., Kfar Saba
rachels@rshein-arc.co.il
www.rshein-arc.co.il





SHEINFELD ARCHITECTS

WHERE EXCEPTIONAL SPACE BEGINS



SHEINFELD ARCHITECTS

WWW.RSHEIN-ARC.CO.IL